

`Not that Smart': Sonia Sotomayor and the Construction of Merit

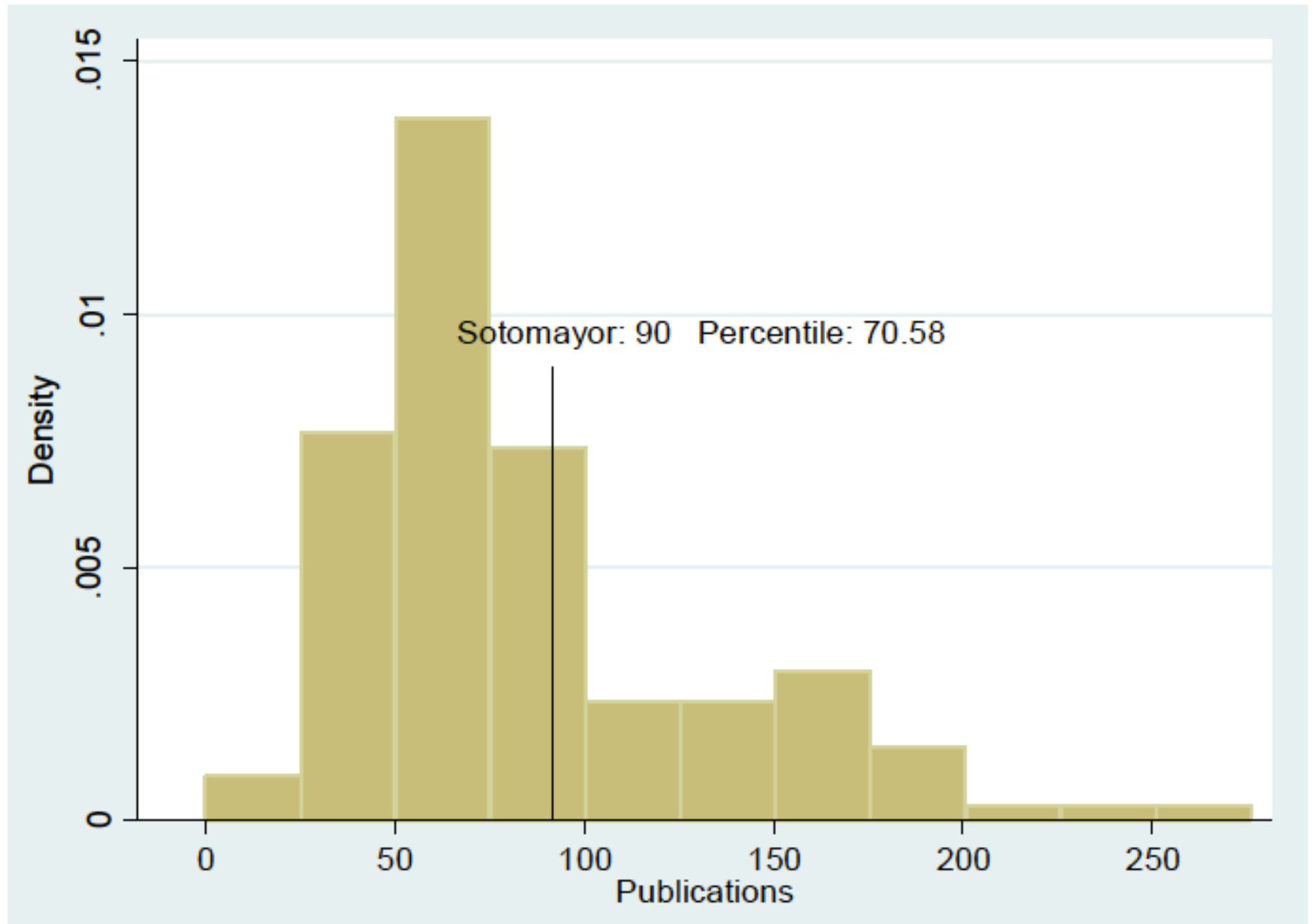
G. Charles, D. L. Chen, and M. Gulati

September 29, 2011

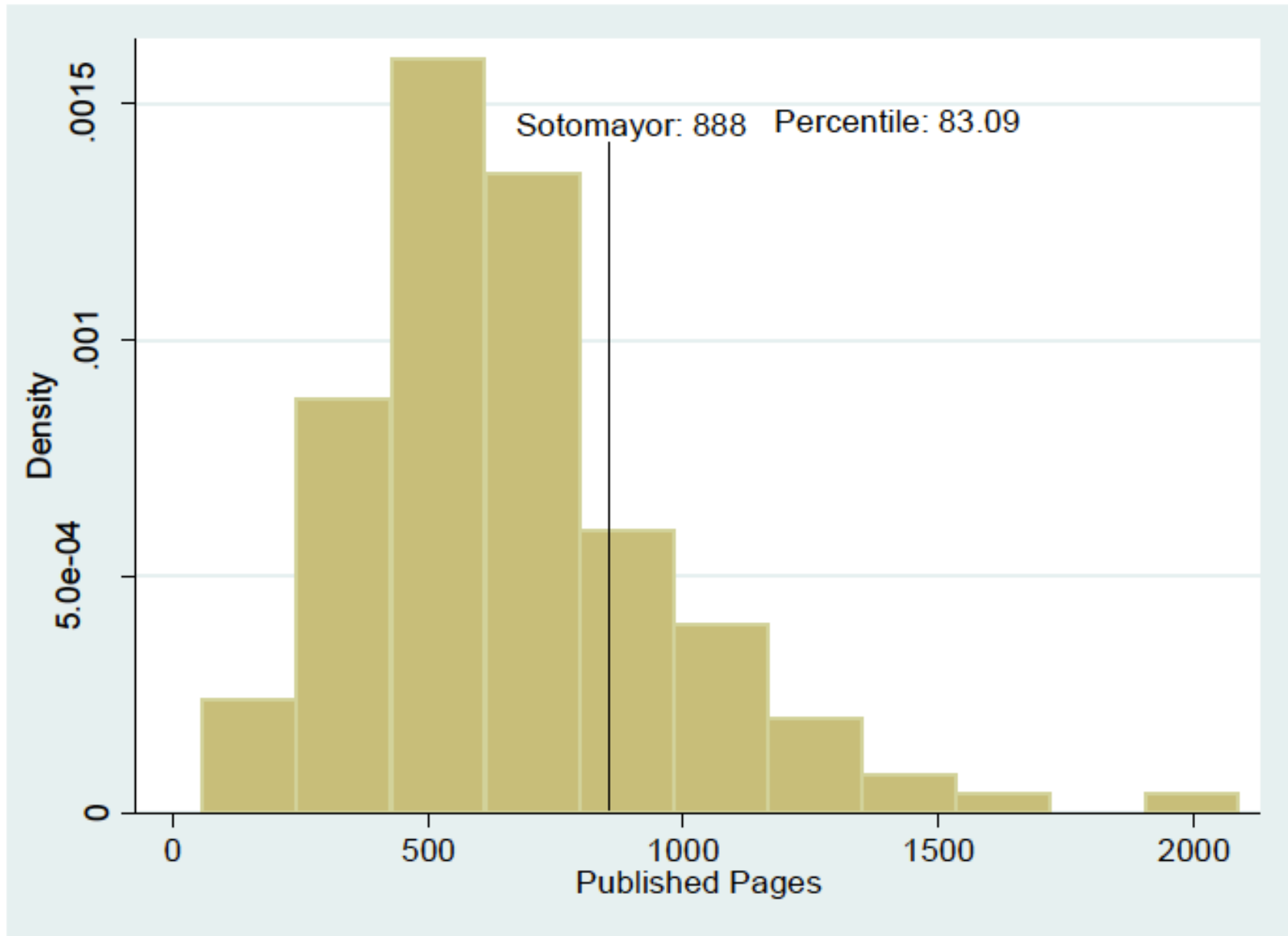
Table X: Sotomayor's Performance Vis-à-vis Nine Measures

<i>Measure</i>	<i>Bottom 25%</i>	<i>Above the Mean</i>	<i>Top 25%</i>	<i>Top Ten (Female)</i>	<i>Top Ten (Overall)</i>	<i>Percentile</i>
Publications	N	Y	N	Y	N	70.6%
Pages	N	Y	Y	Y	N	83.1%
Law Journal Cites	N	Y	Y	Y	N	90.4%
Outside Circuit Cites	N	Y	Y	Y	N	95.6%
Inside Circuit Cites	N	Y	Y	Y	Y	99.6%
State Court Cites	N	Y	Y	Y	Y	99.2%
Secondary Author Effect - Outside Cites	N	Y	Y	Y	N	89.7%
Controlling for Subject Area Effects	N	Y	Y	Y	N	Outside Cites: 91.2% L. Rev Cites: 83.8%
Normalizing for Circuit Effects	N	Y	Y	N	N	Outside Cites: 82.4% L. Rev Cites: 55.9%

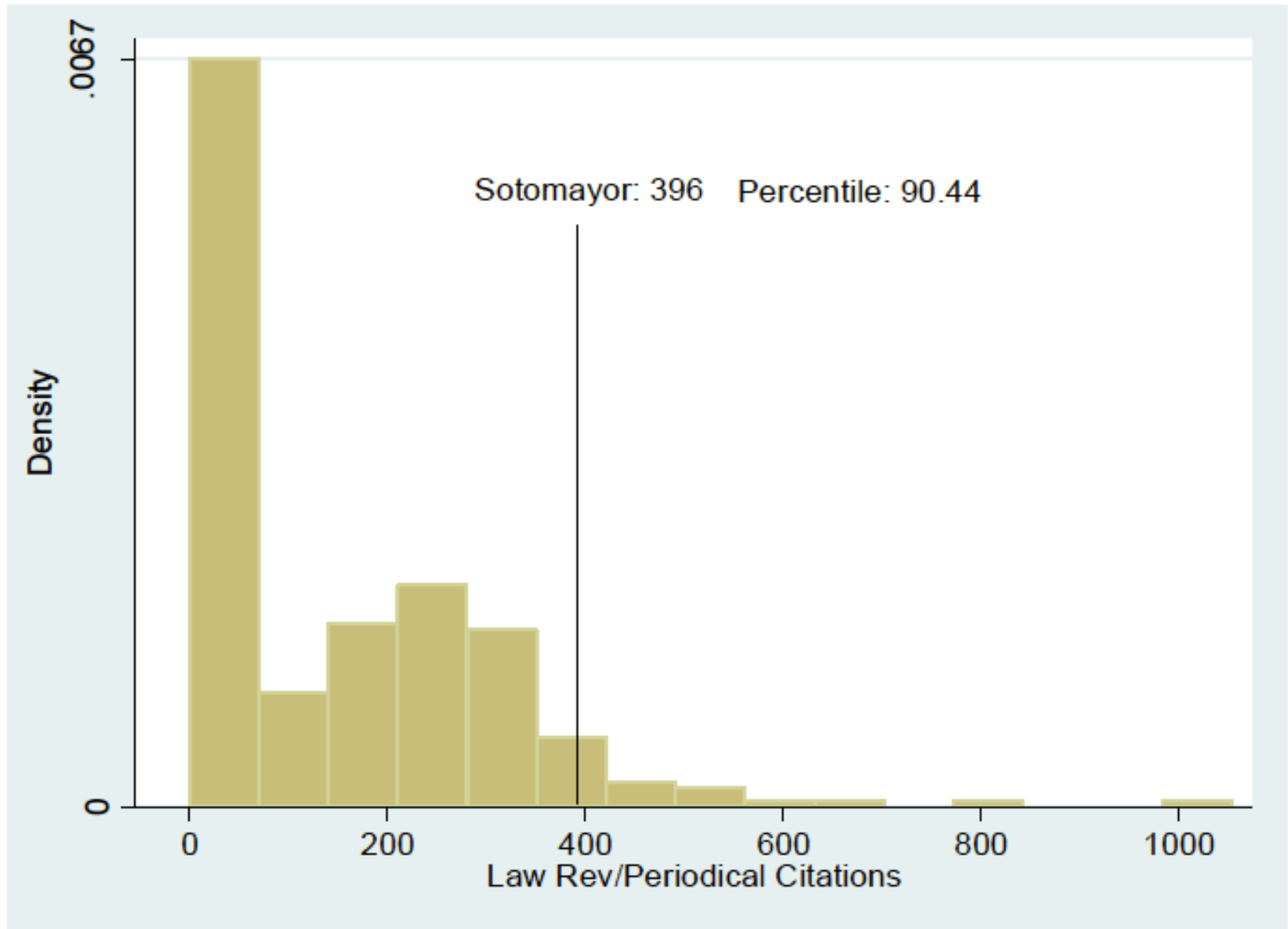
Histogram I: Distribution of Publication Rates



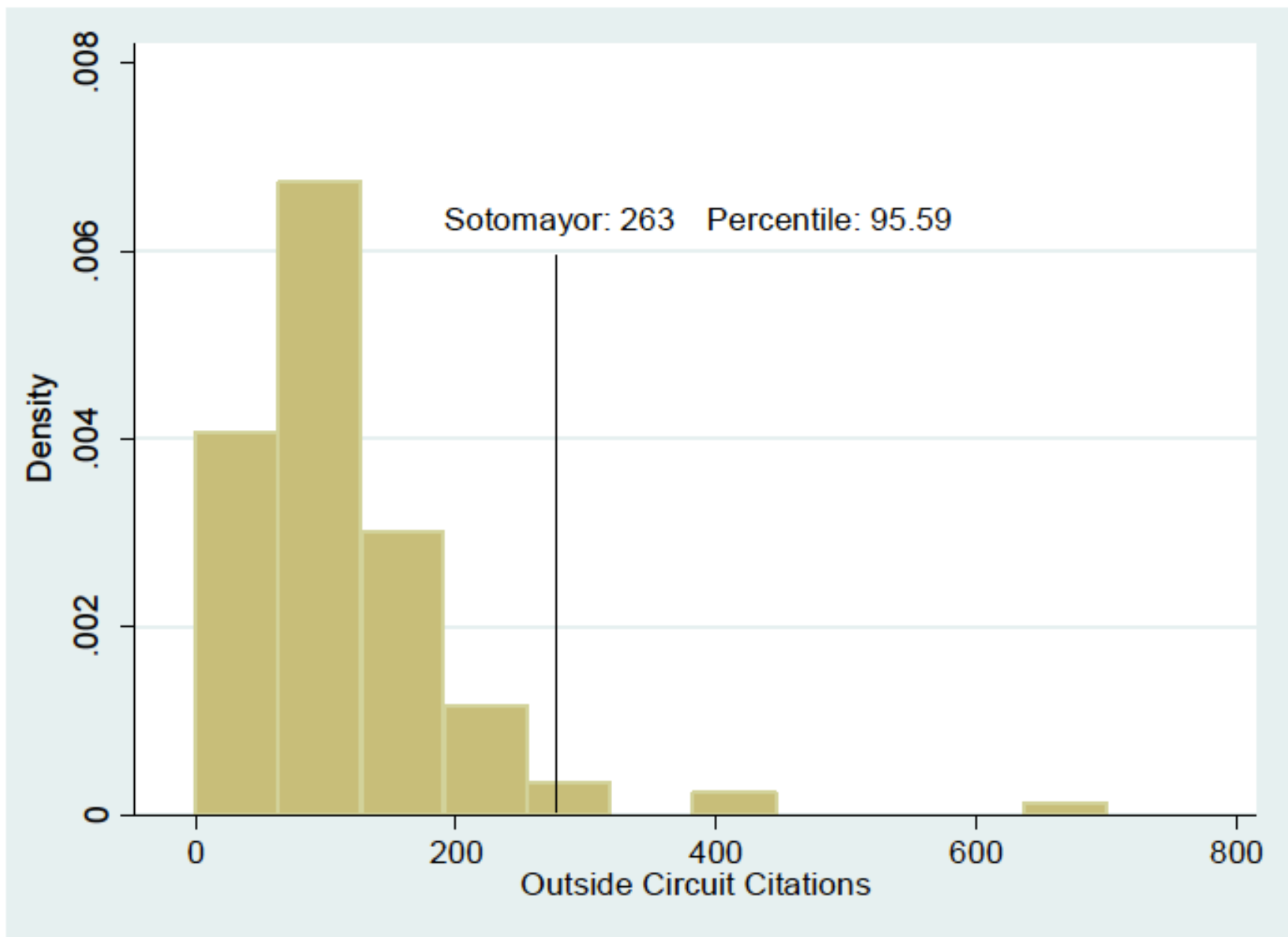
Histogram II: Distribution of Published Pages



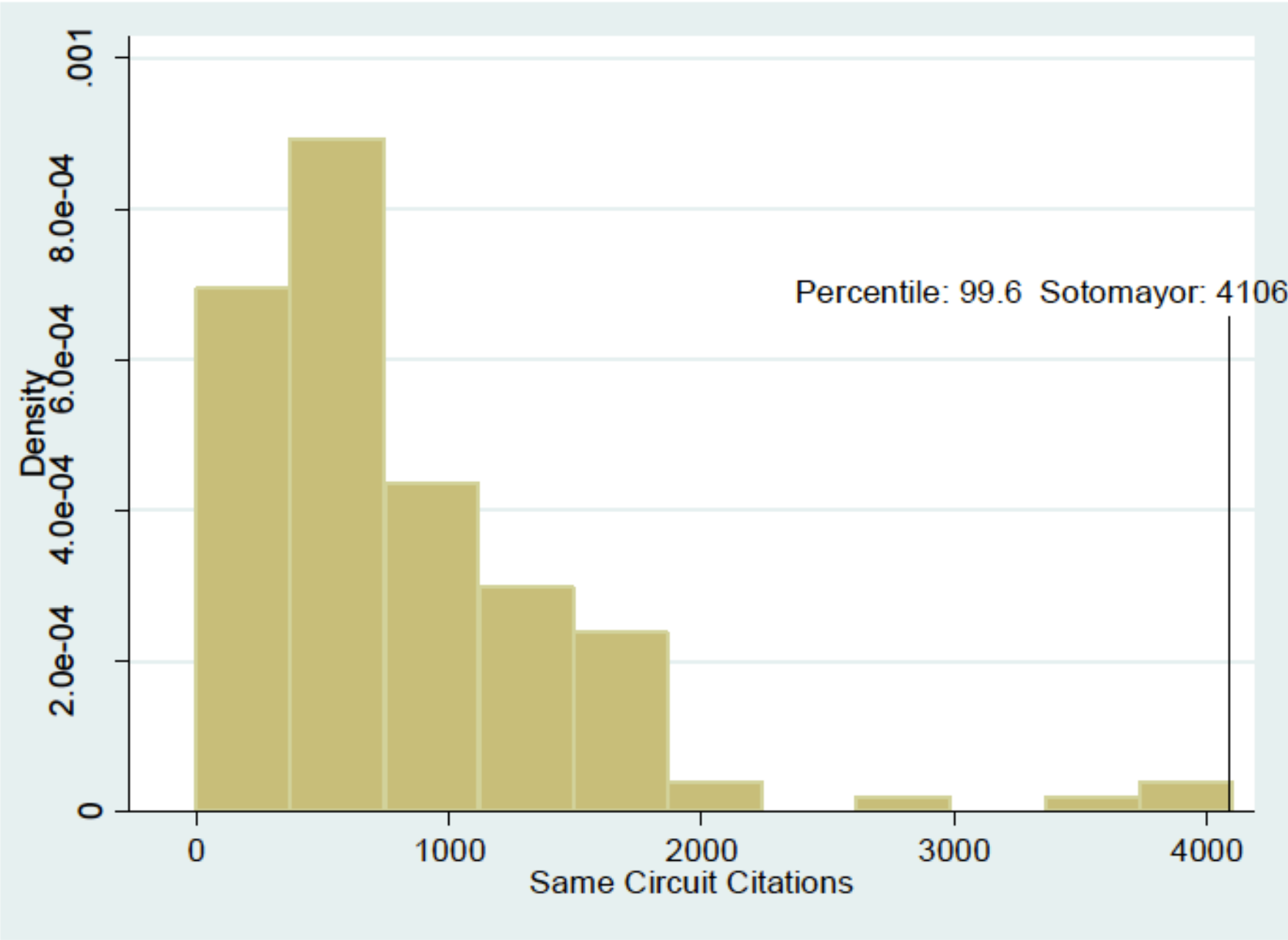
Histogram III: Distribution Pattern of Law Journal Citations



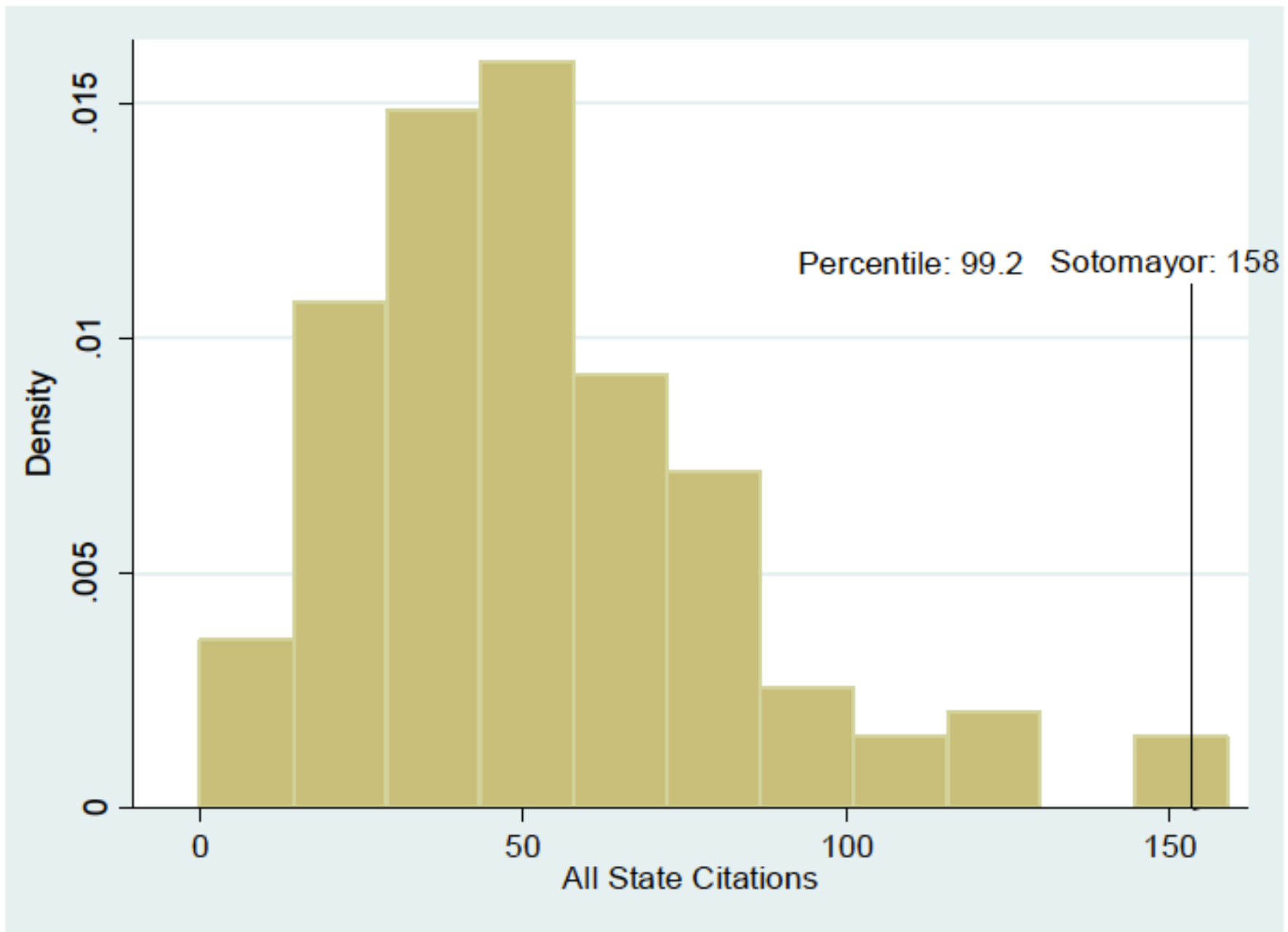
Histograms IV & V: Outside Circuit and District Citations



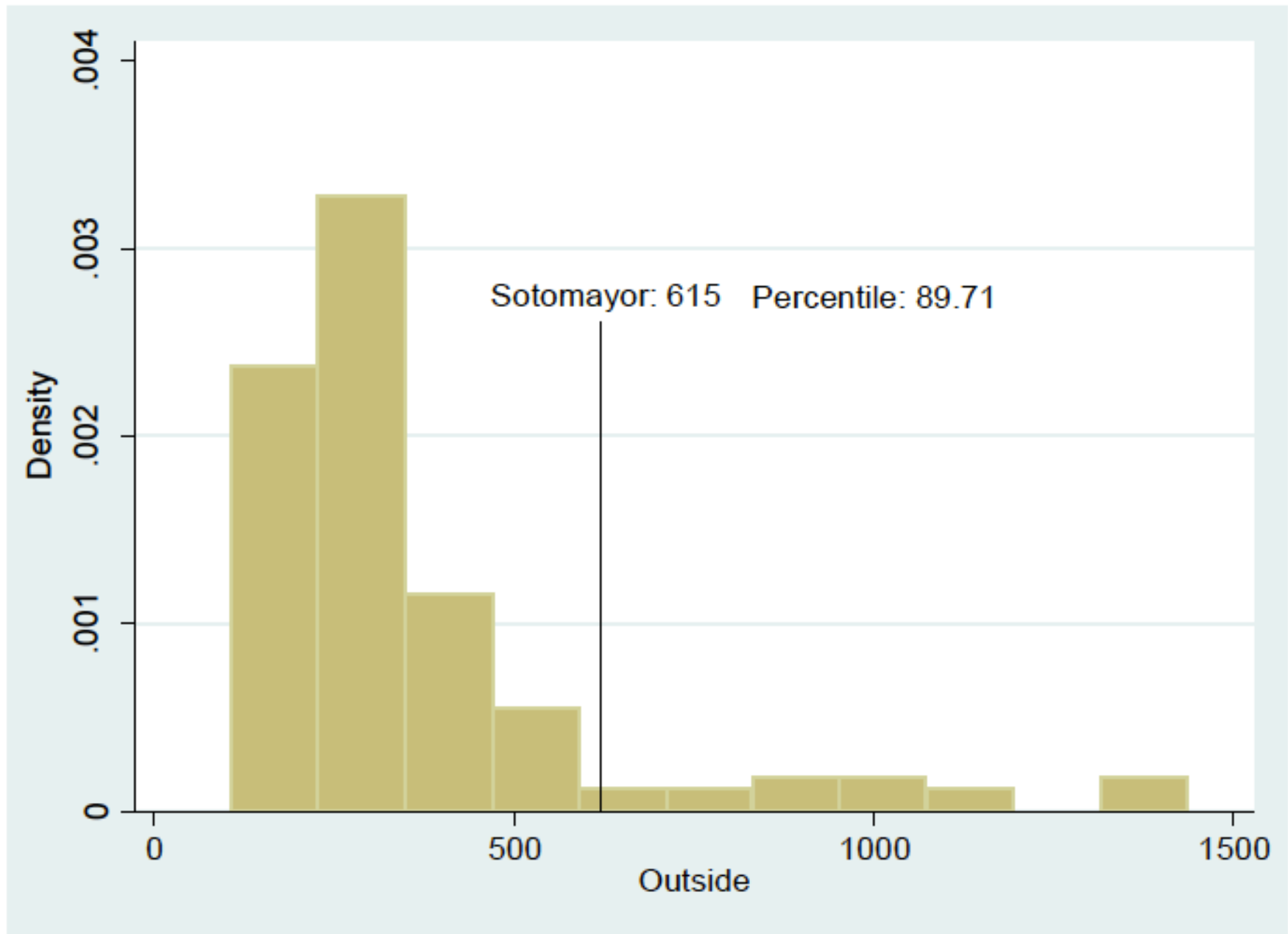
Histograms VI & VII : Inside Circuit and District Citations



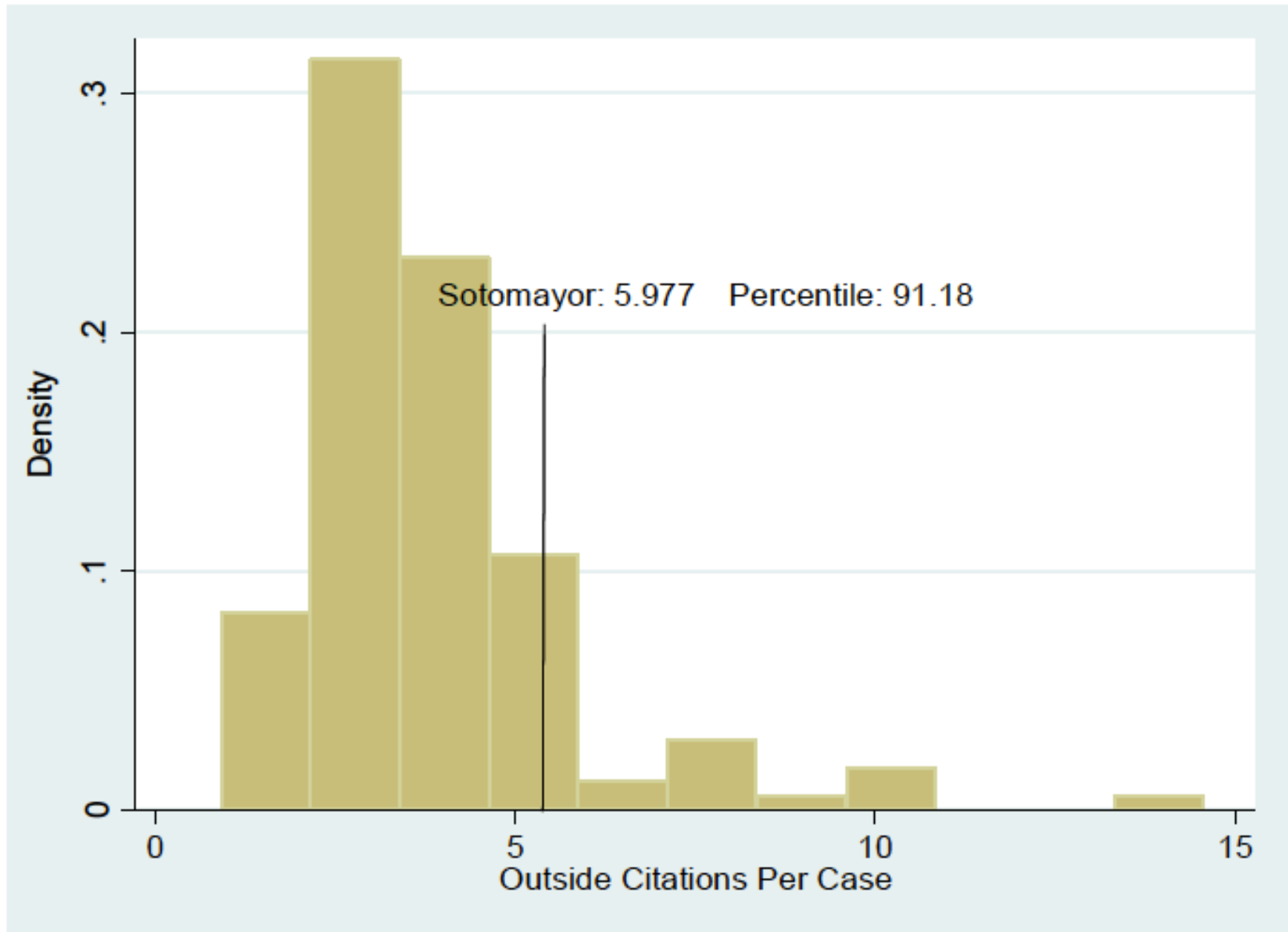
Histogram VIII: Distribution of State Citations



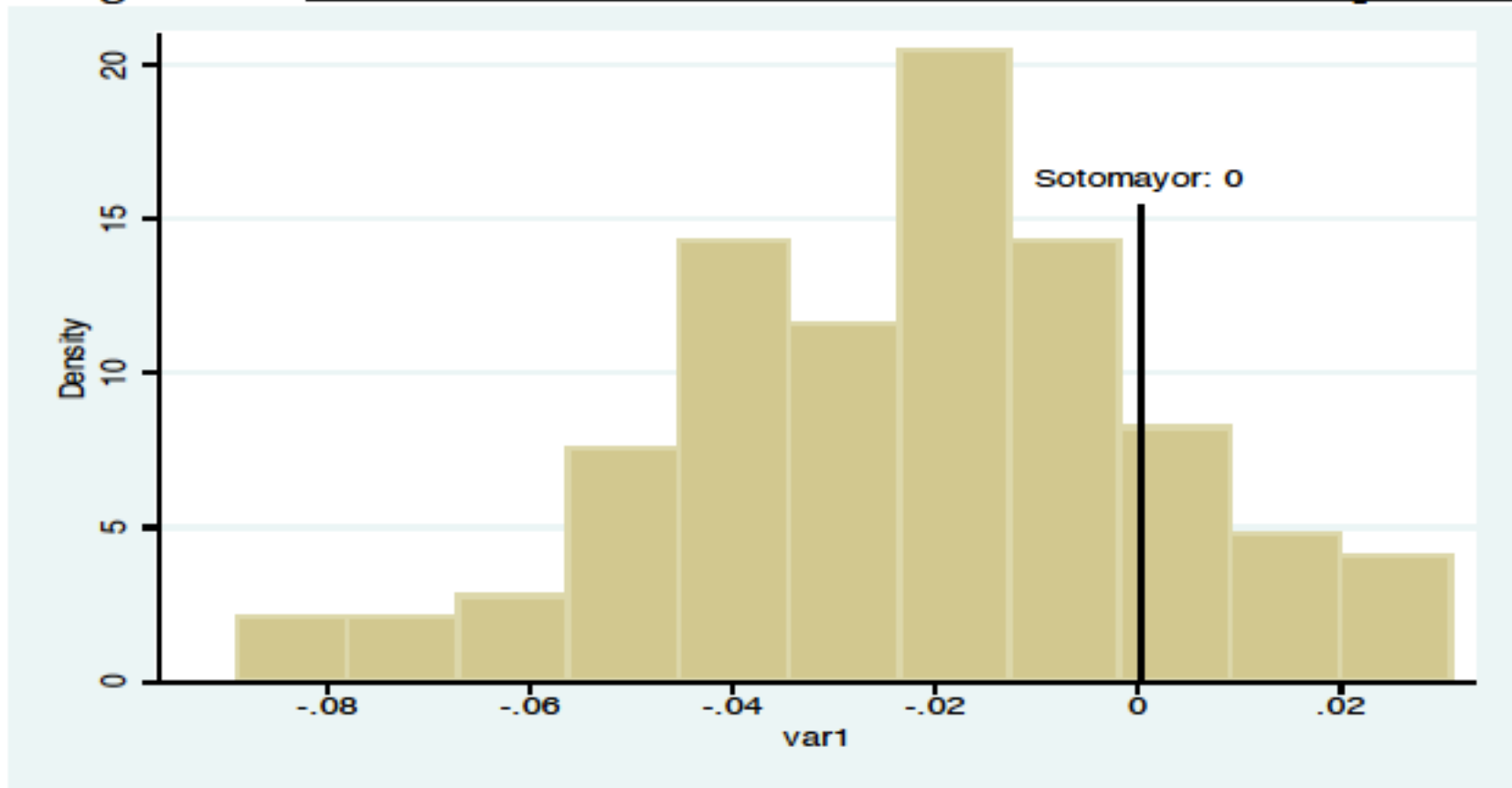
Histogram IX: Distribution of Team Citations



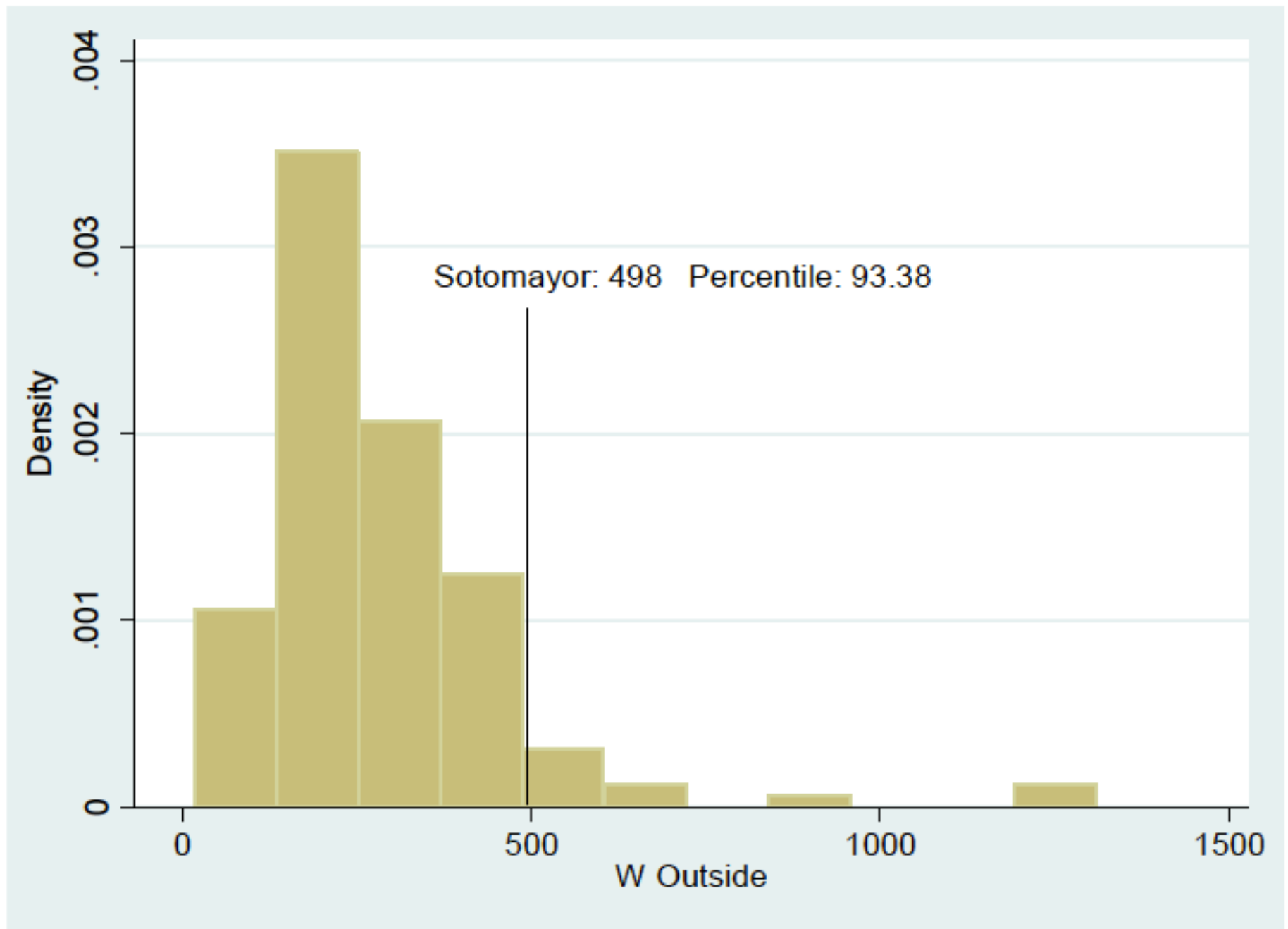
Histogram X: Distribution of Outside Citations per Case



Histogram XI: Distribution of Normalized Outside Citations per Case



HISTOGRAM XIV: DISTRIBUTION OF OUTSIDE CITATIONS (WINSORIZED)



HISTOGRAM XV: DISTRIBUTION OF LAW REVIEW & PERIODICAL CITATIONS (WINSORIZED)

